



PLAYERS SERIES

Installation Instructions

This installation manual is provided for informational purposes only to give the consumer basic understanding of the installation process for XGrass products. The following procedures are in accordance with standard synthetic turf installations. XGrass makes no warranty as to, and bears no liability for, the content or use of this installation manual. XGrass will not be held liable for any "self-installed" putting greens. For self-installed putting greens, owner assumes all responsibility and liability. XGrass representatives will, however, remain available for any questions you may have during your installation.



CONTACT US TODAY: 877.881.8477 | XGRASS.COM



BEFORE YOU BEGIN

NOTICE TO ASSEMBLERS

ALL XGrass Players Series Putting Green Kits, including those used for DISPLAYS, MUST be assembled according to the instructions. Failure to follow instructions could result in INJURY.

IMPORTANT

- This putting green kit is designed to be used for play outdoors over a compacted aggregate base.
- Portability: All of the panels interlock for ease of assembly and disassembly. To move or store the putting green you must disassemble EACH interlocking panel from each other for safety in moving. Two people are required for safe assembly and disassembly.
- Be sure to install the green on a well-draining surface and pitch the ground to allow for proper water evacuation. For best results, install in an area with no more than 3% slope.
- Allow your turf to lay in the warm sun to relax out any wrinkles from packaging and shipping
- Safety First: Two (2) people are recommended for this operation.
- If technical assistance is required contact XGrass 877-881-8477.



TOOLS REQUIRED



Protective Gloves



Knee Pads



Spray Paint



Landscape Rake



Shovel



Push Broom



Plate Compactor



Sod Cutter (if needed)



Tape Measure



Weed Killer (optional)



Post Hole Digger



Wheel Barrow
(if additional fill is needed)



Carpet Kicker



Screwdriver



Narrow Crown Staple Gun
and Stainless Steel Staples
- 1/4" Wide x 1" Long



Air Compressor and Hoses



Double Sided Carpet Tape
(For Temporary Installs)



Tacky Tar Seal Tape
(For Temporary Seams)



Utility Knife and Blades



Seam Roller (optional)

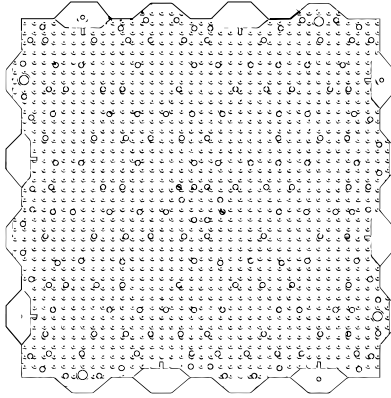


Drawing Chalk

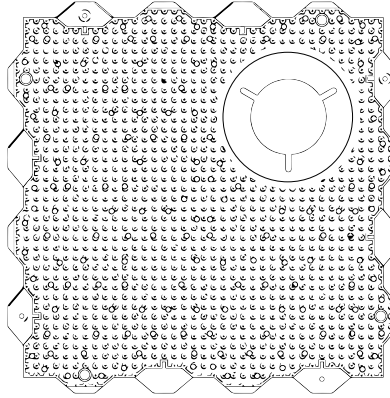
PARTS IDENTIFIER

IMPORTANT

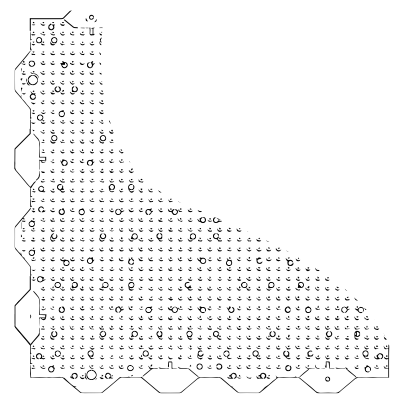
- Identify your model on pages 5-9 before proceeding with assembly. Illustrations in this manual are representative only. Follow the proper diagram for set up of your model.



Players Series Panel



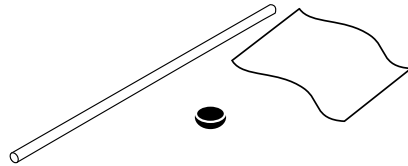
Players Series Panel w/ Cup



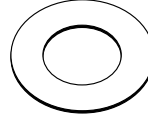
Players Series Cut Panel



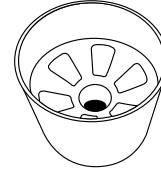
Retriever Base



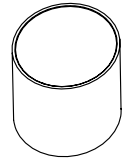
Retriever Pole, Knob & Flag



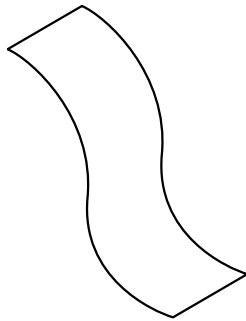
Deck Washer



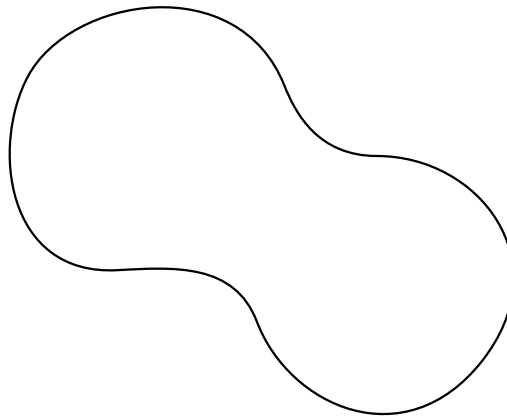
Cup



4" Cup & Installation Accessory

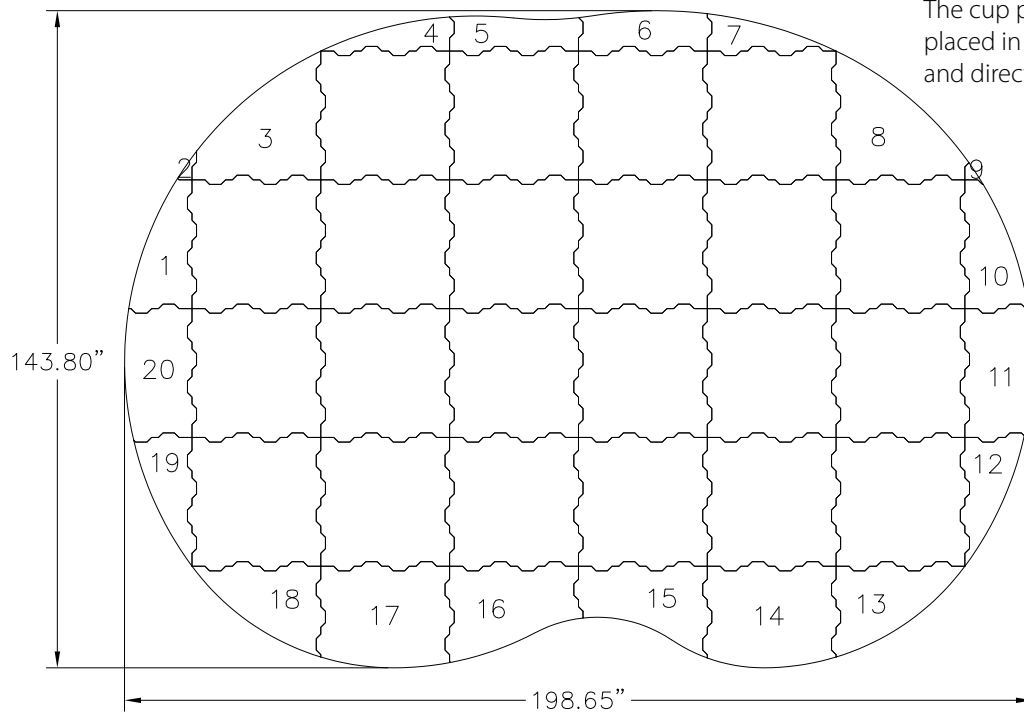


Pre-cut Fringe Turf

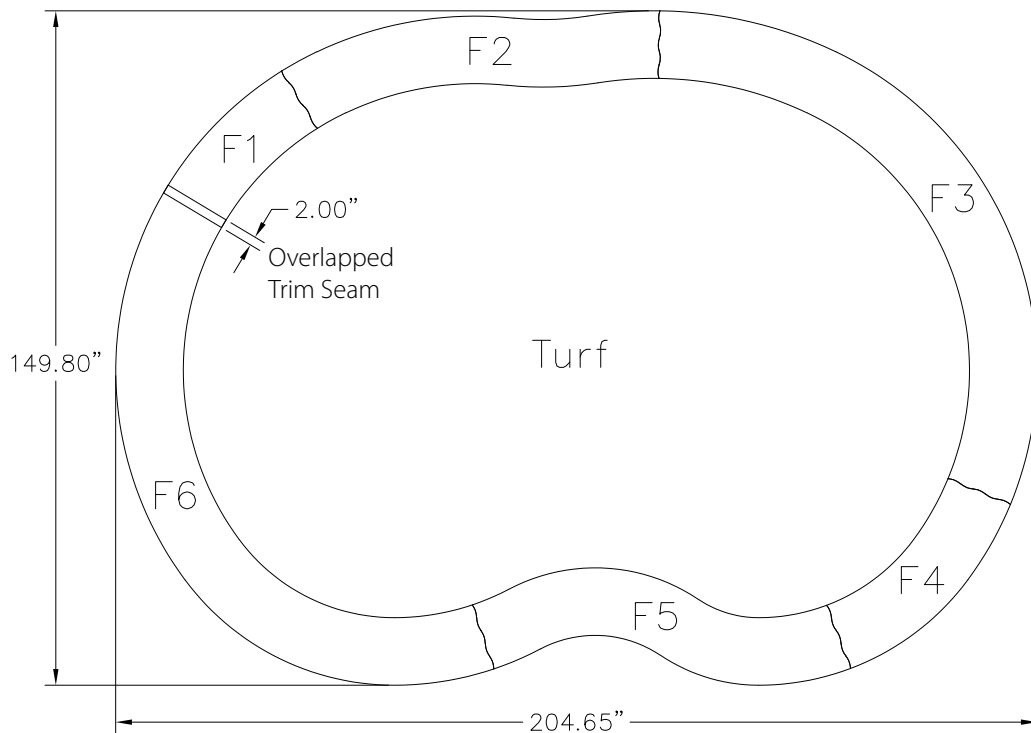


Pre-cut Turf

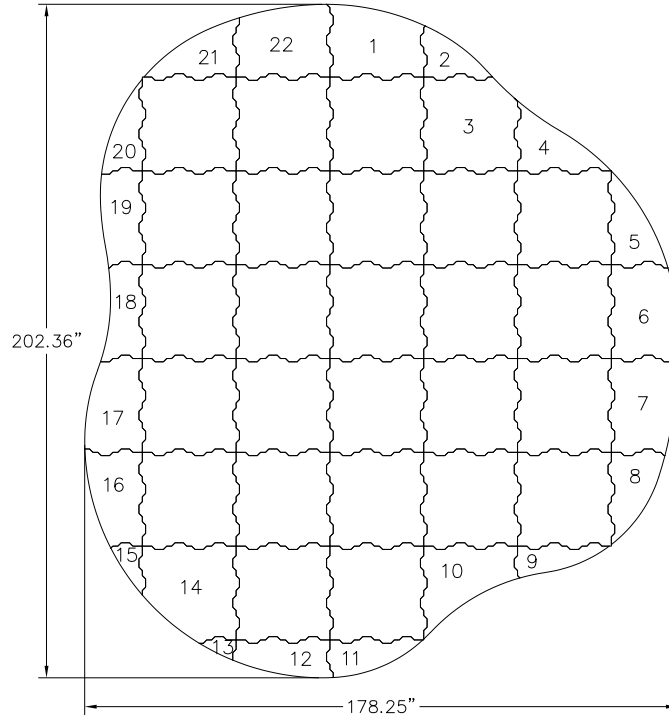
LAYOUTS - THE CAROLINA



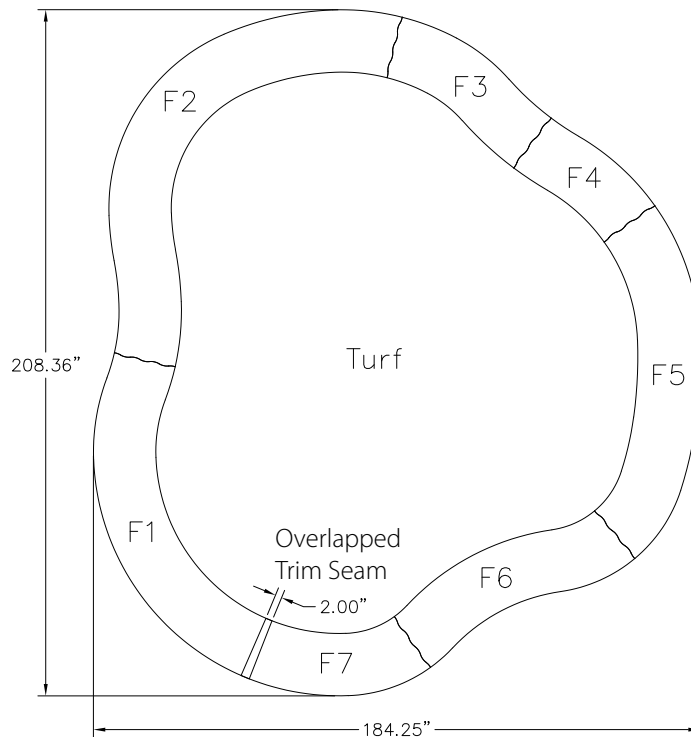
The cup panels can be placed in any location and direction you choose.



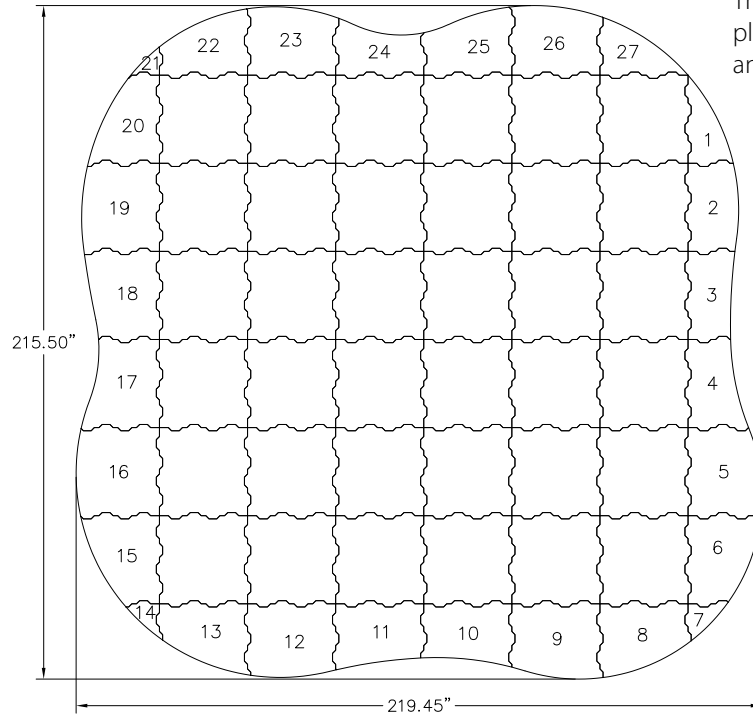
LAYOUTS - THE KIAWAH



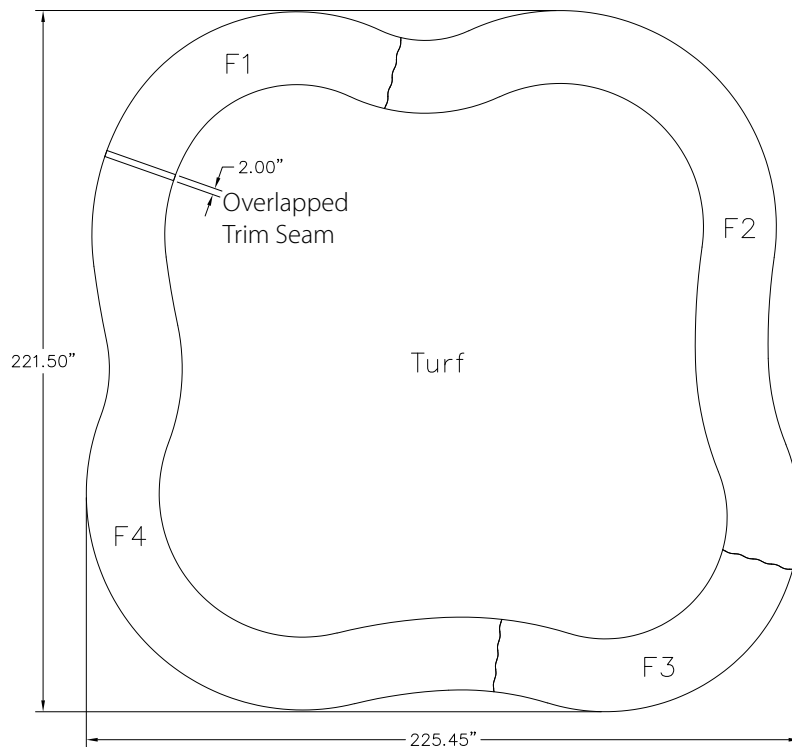
The cup panels can be placed in any location and direction you choose.



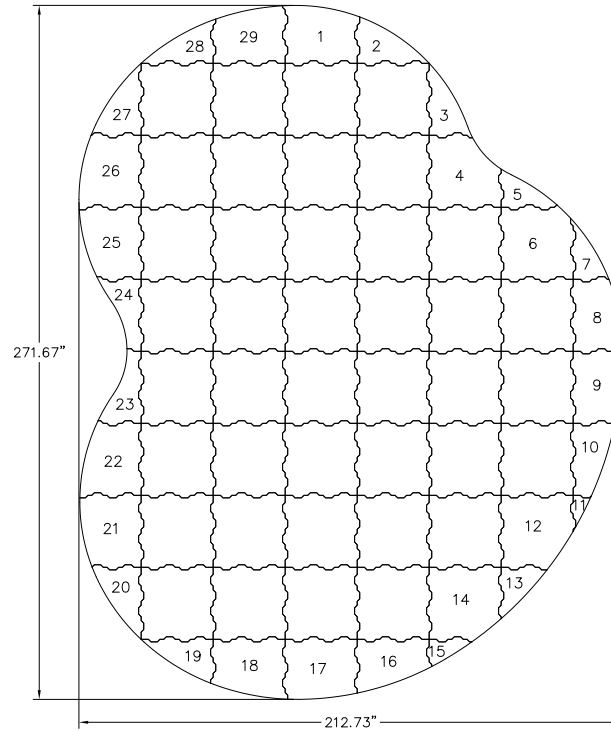
LAYOUTS - THE MONTAUK



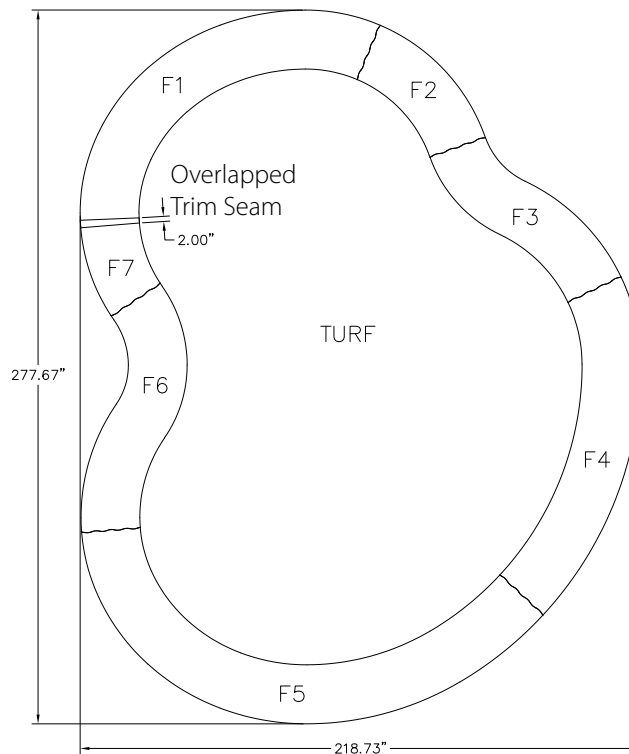
The cup panels can be placed in any location and direction you choose.



LAYOUTS - THE SOUTHAMPTON

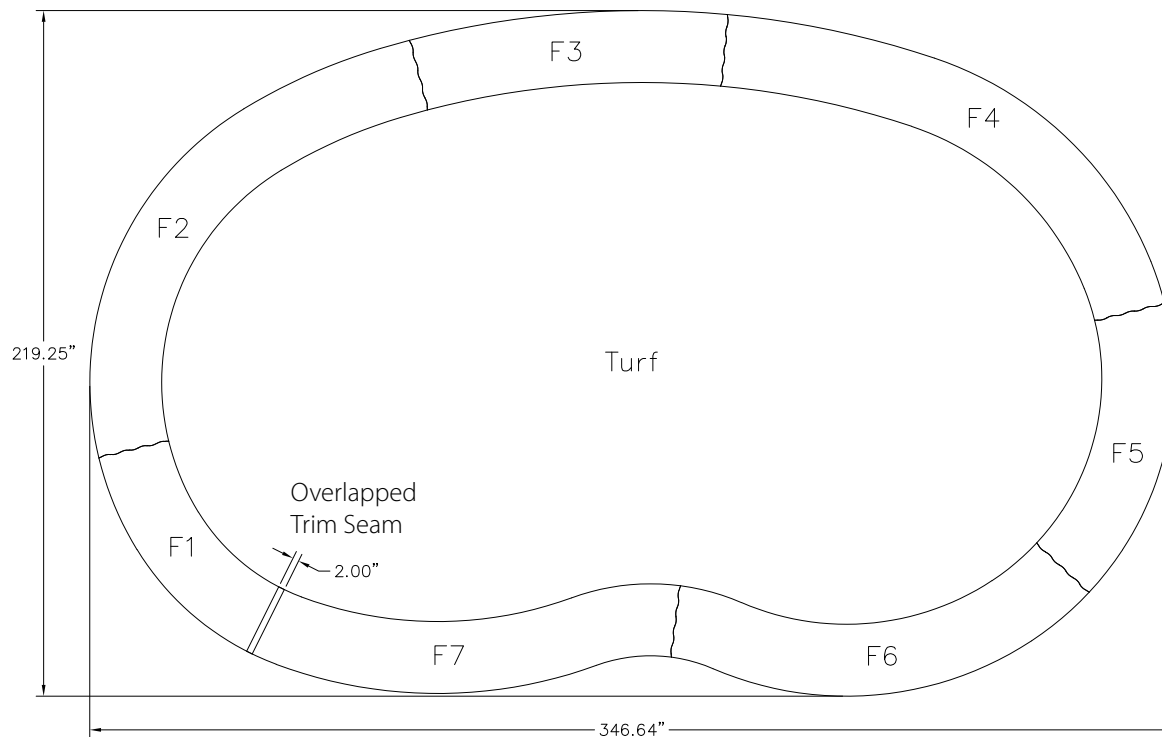
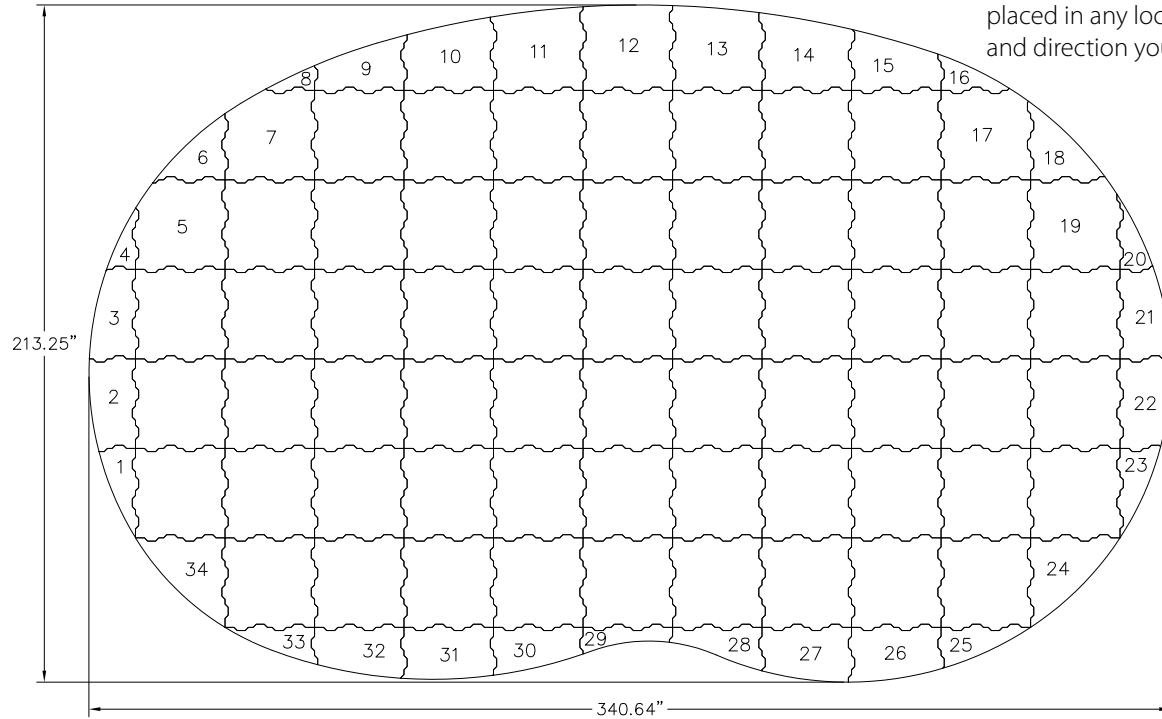


The cup panels can be placed in any location and direction you choose.



LAYOUTS - THE MONTEREY

The cup panels can be placed in any location and direction you choose.



SITE PREPARATION TIPS

1. Find a site that is relatively flat, ideally with no more than 3% slope across either axis of installation.
2. Measure and mark area with spray paint.
3. Remove organic material in the area – use a sod cutter to remove grass, or trim weeds and spray with a weed killer.
4. Level low areas, smooth areas of sharp transition, and/or create desired contours with compactible fine aggregate.
5. Compact the area with a plate compactor and follow Kit Installation instructions.



KIT INSTALLATION - PANEL ASSEMBLY

1. Unpack all materials and stage close to prepared installation site.
2. Unroll turf so it can relax (in the sun if possible).
3. Install the geotextile fabric in the installation area.
4. Begin installation of numbered panels according to the diagram the matches your kit. Place Precut and numbered edge panels in approximate position. **WEAR KNEE PADS AND GLOVES**
5. Place center panels in approximate positions Note: interior panels are full tiles and not labeled. Place the pre-drilled cup panels. Note: the panels can be turned in any 90 degree orientation to help place the cup hole in the desired location.
6. Click entire panel base system together



KIT INSTALLATION - IN GROUND SLEEVE

1. Place the Players Series panel w/ Cup in the proper location and carefully mark the hole location on the weed cloth. Remove the panel. Fig.1
2. Cut the weed mat and excavate the hole to the depth of the internal sleeve. Included is a small plastic bucket around 8" Diameter and about 8" deep. Fig. 2
3. Cut several large holes in the bottom of the bucket to allow for drainage. Fig. 3
4. Once the hole is cleaned out insert the bucket to ground level and replace the panel to check alignment .Be sure to excavate down about 3" deeper then the bucket.
5. Remove the panel and bucket and pour about 3" of gravel in to the hole. Fig. 4
6. Insert the bucket to earth level and backfill all around the bucket to secure in place. You may need to remove or add a bit of gravel to get to the proper height. Which is even with the ground level. Be sure to compact earth firmly around bucket and on top.
7. Place a new piece of weed cloth over the bucket and spike in place. Fig. 5
8. Cut a hole in the cloth using the inside of the bucket as a guide.
9. Replace the panel. Fig. 6
10. Install the cup accessory in each hole location prior to installing the turf.



Fig. 1



Fig. 2



Fig. 3



Fig. 4



Fig. 5



Fig. 6

KIT INSTALLATION - CUP ASSEMBLY

1. Insert the 3 set screws into the side of the filler plate. Fig.1
2. Insert the two 6" bolts through top of filler plate. Fig. 2
3. Thread the two bolts on to the support bracket. Fig. 3
4. Check the position of the 3 set screws to allow the cup to pass through the filler plate opening down to the support bracket. If they need to be adjusted out use a Phillips head screwdriver.
5. Insert a 6" or 4" cup through the top of filler plate.
6. Adjust the cup height by equally tightening or loosening the two long bolts. Fig 4
7. Adjust the 3 set screw to just touch the cup. If the cup is straight all 3 screws should be turned in the same amount. Fig 5
8. If the panel is on a slope the the cup can be tilted up to 10 degrees by tightening on bolt more then the other. Fig 6
9. Remove the entire cup accessory from the panel and tighten the 3 set screws until they just touch the cup. A tilted cup will have the set screws turned in different amounts.. You may need to check the fit a few times to get it just right. All you are trying to achieve is a firm fit. This will add great lateral stability to the cup when installed in the panel. Don't force the cup in place, as you may not be able to get it out in the future. Fig 7, Fig 8, Fig 9
10. Once the fit is achieved lightly sand and scratch the outside of the cup at the filler plate level in preparation of gluing. Fig 10
11. Wipe the cup and plate clean and apply a thin bead of high temperature hot melt glue to the outside of cup to lock it on to the filler plate. We have found that industrial hot melt glue works fast and is very strong. Do Not use a low temperature craft hot glue. Fig 11
12. Insert the cup assembly into the panels as usual and install the deck washer. Fig 12



Fig. 1



Fig. 2

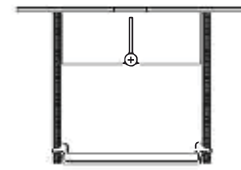


Fig. 3

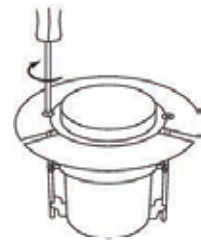


Fig. 4

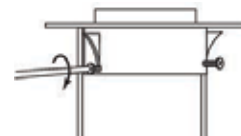


Fig. 5



Fig. 6

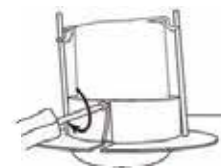


Fig. 7

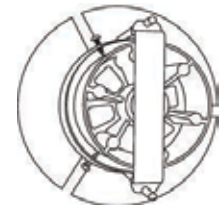


Fig. 8



Fig. 9



Fig. 10



Fig. 11

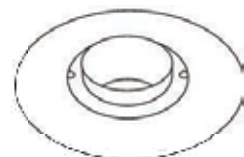


Fig. 12

KIT INSTALLATION - CUP ASSEMBLY

13. This new assembly does not have as much float as the normal cup. However more movement can be achieved by cutting the interior opening of the hole in the panels larger using a jig saw. Don't remove too much material from the panel, about 1/4 to 1/2 inch ring will be plenty. Some installers will permanently staple the assembly to the panel to achieve a more rigid cup but this will eliminate ALL float and is the decision of the installer to do so. This technique could be used in a high wind environment to help stabilize a 7ft tall flag stick. Fig 13
14. Install turf as usual. Fig. 13 If the cups are used on high pile turf it may be necessary to adjust to the proper height after the turf has been installed and the cups cut. Simply lift back the turf and adjust the 2 long bolts to achieve the proper height. Make sure the setscrews are still resting against the outside of the cup for stability.

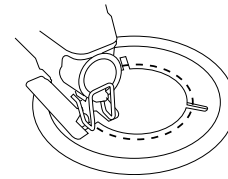


Fig. 13

KIT INSTALLATION - TURF AND FRINGE



1. Place putting turf on the installed panels leaving equal space between the edge of turf and outside panel edge. Approximately 16"-18"



2. Place Fringe Turf according to the diagram. Approximately 3" of fringe should hang over the edge of the panel to wrap, staple and bury



3. Fit all fringe seams. Trim the overlapped seam as needed.



4. Smooth putting turf and staple to panels beginning with the edge, once perimeter is secure and all wrinkles are removed, secure the center NOTE: For temporary installation use double sided carpet tape



5. Staple fringe seams NOTE: For temporary installation use double sided carpet tape



6. Roll seam with seam roller to blend fibers (optional). You can also use your hands to blend the fibers at the seams

KIT INSTALLATION - TURF AND FRINGE



7. Wrap and Staple fringe turf to outer edge of panels



8. To cut in holes, pierce through the putting turf in the center of the cup and carefully cut the turf in a line to the outside edge of the cup - cut the outside radius using the cup edge as a guide. Slow and steady!



9. Remove the temporary spike in the bottom of the cup to restore cup motions.